

Atlantic

Atlantic creates cohesive colour schemes when paired with knit and mesh options. It is a hardworking polyester material with a broad range of solid colour options.

Le tissu Atlantic permet de créer une harmonie de tons lorsqu'il est associé à une finition tissée ou résille. Il s'agit d'un tissu polyester haute-performance proposé en une multitude de couleurs.

Atlantic schafft in Kombination mit Knit- und Mesh-Optionen ein durchgängiges Farbschema. Das widerstandsfähige Polyestermaterial ist in einer großzügigen Auswahl an Farben erhältlich.

Atlantic crea esquemas de colores cohesivos cuando se combina con opciones de tejido y malla. Es un material de poliéster resistente con una amplia gama de opciones de colores sólidos.

Disclaimer

EN: There may be variation in color, texture, and finish between this sample and the actual product.

FR: La couleur, la texture et les finitions de cet échantillon sont susceptibles de différer légèrement de celles du produit.

DE: Es kann Abweichungen zwischen Muster und tatsächlichem Produkt geben, was Farbe, Textur und Oberfläche angeht.

ES: Puede que existan variaciones en el color, textura o acabado entre esta muestra y el producto actual.

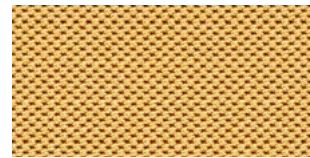
Atlantic



Coconut AT14
Coconut
Coconut
Coco



Canary AT22
Jaune canari
Kanarienvogel
Canario



Honey AT29
Miel
Honig
Miel



Tangerine Orange AT19
Mandarine
Orangerot
Naranja mandarina



Saffron AT31
Safran
Safran
Azafrán



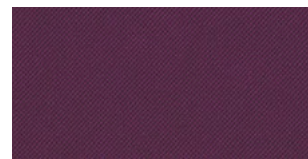
Red AT01
Rouge
Rot
Rojo



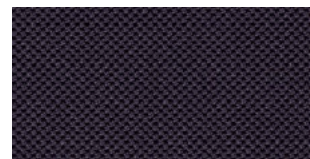
Scarlet AT15
Rouge Scarlet
Dunkelrot
Bermellón



Merlot AT28
Merlot
Merlot
Merlot



Concord Purple AT23
Lilas
Lila
Violeta concordia



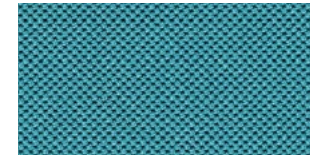
Aubergine AT25
Aubergine
Aubergine
Berenjena



Blue Jay AT16
Bleu geai
Kobaltblau
Azul arrendajo



Royal Blue AT08
Bleu royal
Königsblau
Azul real



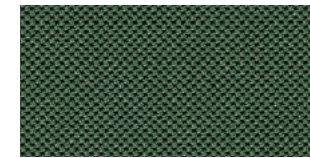
Lagoon AT30
Lagon
Lagune
Laguna



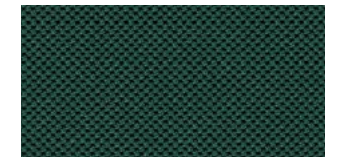
Blue AT06
Bleu
Blau
Azul



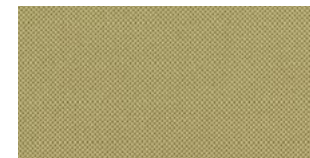
Wasabi Apple Green AT21
Vert wasabi
Apfelgrün
Wasabi verde manzana



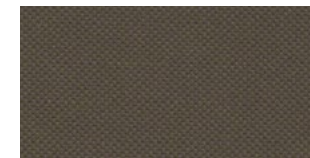
Jungle AT27
Jungle
Dschungel
Selva



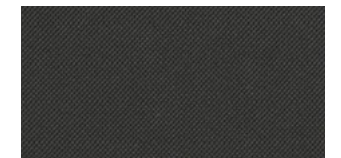
Peacock AT26
Bleu paon
Pfau
Pavo real



Malt Beige AT20
Beige malt
Malzbeige
Beige malta



Root Beer AT18
Gris cendre
Malzbier
Malta tostada



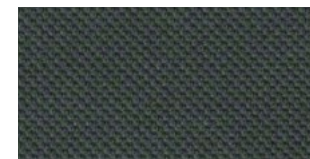
Graphite Pepper AT24
Gris graphite
Graphit Pfeffer
Pimienta grafito



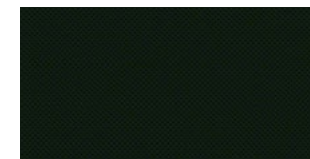
Nickel AT17
Nickel
Nickel
Niquel



Grey AT02
Gris
Grau
Gris



Pepper AT10
Poivre
Pfeffer
Pimienta



Black AT04
Noir
Schwarz
Negro

Atlantic

Price Group 2

Europe, Middle East and Africa

Technical Specifications

Contents: 100% Polyester | **Abrasion:** 110,000 Martindale | **Fire Rating:** EN 1021-1

Weight: 350 g/m²

Material Characteristics

Width: 150 cm | **Vertical Repeat:** None | **Horizontal Repeat:** None | **Backing:** None

	Cogent: Connect Americas Finish Code	Europe, Middle East and Africa Finish Code	Cogent: Connect Asia Pacific Finish Code	Gabriel Colour
Red Rouge Rot Rojo	—	AT01	—	64089
Grey Gris Grau Gris	—	AT02	—	60011
Black Noir Schwarz Negro	5S26	AT04	5S26	60999
Blue Bleu Blau Azul	—	AT06	—	66057
Royal Blue Bleu royal Königsblau Azul real	5SD0	AT08	5SD0	66062
Pepper Poivre Pfeffer Pimienta	—	AT10	—	60025
Coconut Coconut Coconut Coco	5S15	AT14	5S15	60063
Scarlet Rouge Scarlet Dunkelrot Bermellón	5S18	AT15	5S18	64105
Blue Jay Bleu geai Kobaltblau Azul arrendajo	5S21	AT16	5S21	66086
Nickel Nickel Nickel Niquel	5S24	AT17	5S24	60134
Root Beer Gris cendre Malzbier Malta tostada	5S28	AT18	5S28	61158
Tangerine Orange Mandarine Orangerot Naranja Mandarina	5S17	AT19	5S17	63066
Malt Beige Beige malt Malzbeige Beige malta	5S27	AT20	5S27	61194
Wasabi Apple Green Vert wasabi Apfelgrün Wasabi verde manzana	5S23	AT21	5S23	68119
Canary Janue canari Kanarienvogel Canario	5S98	AT22	5S98	62056
Concord Purple Lilas Lila Violeta concordia	5S19	AT23	5S19	65087
Graphite Pepper Gris graphite Graphit Pfeffer Pimienta grafito	5S25	AT24	5S25	60174
Aubergine Aubergine Aubergine Berenjena	5SD1	AT25	5SD1	65088
Peacock Bleu Paon Pfau Pavo real	5SD2	AT26	5SD2	67060
Jungle Jungle Dschungel Selva	—	AT27	—	67059
Merlot Merlot Merlot Merlot	—	AT28	—	64134
Honey Miel Honig Miel	—	AT29	—	62061
Lagoon Lagon Lagune Laguna	5SD3	AT30	5SD3	67061
Saffron Safran Safran Azafrán	5SD4	AT31	5SD4	63073